

# Drama Learning Journey

- Knowledge
- Subject Specific Skills

Question: Is it important to stay true to a playwright's intention?  
Component 3 - Understanding Drama - Study of set text An Inspector Calls

Progression to next stage of learning:  
A Level Drama & Theatre  
BTEC Performing Arts  
Performing Arts Colleges



## Understanding Drama



## Texts in Practice

Given circumstances  
Emotion Memory



Playwright intentions,  
deconstructing text, J.B. Priestley,  
Social & Historical context

Set & Staging  
Costume  
Lighting  
Sound

Question: What role does An Inspector Calls tackle class systems?  
Component 3 Study of Text

Question: How can you communicate effectively to an audience?  
Component 2 – study of plays for monologues and/or group work



## Understanding Drama



## Devising Drama

11

Question: How can you create good theatre?

Students will explore a range of stimuli & use their knowledge of performance styles, genre & form to devise a piece of theatre  
Component 1

Brecht, Stanislavski,  
Berkoff, Artuad,  
Frantic Assembly

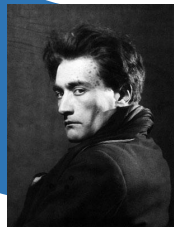
Question: Is making people laugh easy?  
Exploring a range comedic styles, students try to make an audience laugh

Use of stimulus,  
storytelling

Question: What makes good theatre?  
Students will explore a range of stimuli to devise pieces of theatre



## Style & Genre



10



## Devising

Proxemics  
Staging  
Narration  
Mime  
Lighting  
Sound

Question: Whose style is it anyway?  
Component 1 intro to devising – workshop practitioner's styles

Sit com, Farce, Slapstick  
Physicality, Naturalism,  
Comedic timing

Question: Theatre should connect to people's lives not be a piece of candy floss.  
Agree or Disagree? A study of Nature vs Nurture.

Question: Can movement show more?  
Students will explore how movement can be used to create meaning.

Given circumstances

## Physical Theatre



9



## Blood Brothers

Characterisation  
Vocal Skills  
Narration

Vocal dynamics  
Rhythm  
Choral Movement

Non naturalism  
Status, Physicality

Question: Should drama educate or entertain?  
Students explore ideals of Bertolt Brecht, looking at epic theatre and the conventions used

Tableau, TT, Narration, Flashback  
Script reading, Stage directions

Question: Should drama comment on life?  
Students will look at whether drama is separate from the real world or can it influence feelings?

Narration,  
Flashback,  
Levels +  
Proxemics,  
Monologues

## The Tempest

## Brecht and Theatre

8



## The Terrible fate Of Humpty Dumpty

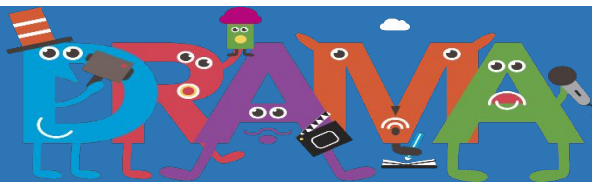
Question: Can you show emotion? Melodrama– To explore the performance style of melodrama including heightened expressions, stock characters and storytelling

Flashback  
Non linear storytelling  
Narration  
Flashback  
Crosscutting  
Tableau  
Levels  
Proxemics  
Use of voice



7

## Intro to



## Melodrama

Question: What is Drama? Introduction to drama and an exploration of theatrical devices used

Status, performance style

Storytelling  
Stock Characters  
Characterisation

### Assessments:

Students are assessed twice per unit, 1 rehearsal interim assessment and 1 performance assessment at the end of the unit